



QP - 7016V

16 Ports Nway Gigabit Ethernet Switch

Description

The Switch provides 16 10/100/1000M ports. It was designed for easy installation and high performance in an environment where traffic on the network and the number of user increase continuously.

With newest Gigabit chip set, 19" Gigabit Ethernet switch can fully support highest speed without hanging on problem even when Full-Duplex full loaded.

Features

- Complies with the IEEE802.3 Ethernet, IEEE802.3u Fast Ethernet and IEEE 802.3ab Gigabit Ethernet Standard.
- 16 Port 10/100/1000M Nway (Auto-negotiation) Switch
- 19" inch rack mount size
- Non-blocking & Non-head-of-line blocking full wire speed forwarding
- Store-and-forward operation support
- Embedded 340 KB packet buffer
- Supports 9.6 KB JUMBO packet
- Provides 8K MAC address entry
- Supports broadcast storm filtering
- All ports provide Auto-Negotiation and Auto -MDI/ MDI-X functions.
- Supports flow control: Back pressure for Half-duplex and IEEE 802.3x for Full-duplex mode.
- Smart plug & play

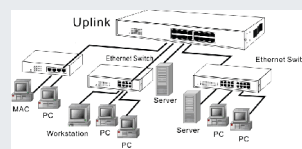
Specifications

Standards	IEEE 802.3 10 BaseT IEEE 802.3u 100BaseTX IEEE 802.3ab 1000BaseT IEEE 802.3x Flow control
Features	Number of Ports: 16 MAC Address: 8K Buffer Memory: 340 KB Jumbo Frames: 9.6 KB Method: Store and Forward
Filtering/ Forwarding Rates	1000Mbps port – 1,488,000pps 100Mbps port – 148,800pps 10Mbps – 14,880pps
Transmission Media	10BaseT Cat. 3, 4, 5 UTP/STP 100BaseTX Cat. 5 UTP/STP 1000BaseT Cat. 5E UTP/STP
LED Indicators	Per Port: LINK/ACT, 1000M Per Unit: Power
Power Requirement	90~260V/AC, 50~60Hz
Power Consumption	20 Watts (Max)
Dimensions	440 x 220 x 44 mm (L x W x H)
Weight	2.9 kg
Operating Temperature	0 to 55°
Storage Temperature	-20 to 90°
Humidity	10 to 90% RH (non-condensing)
Certifications	FCC Class B, CE

Connections

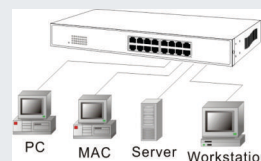
Switch/Hub to this 16 Ports Gigabit Ethernet Switch

This switch provides automatic crossover detection functionality for any port. It is simple and friendly to up-link to another switch without crossover cable.



PC/Other devices to this 16 Ports Gigabit Ethernet Switch

Via a twisted pair cable straight through, this switch can be connected to PCs, servers and other network devices.



Rear Panel (Power)

AC input

AC input (90~260V/AC, 50~60Hz) UL Safety

