

QP - PP48E

Cat. 5E, Patch Panel 45° Degrees, 48 Ports, T568A/B

Features

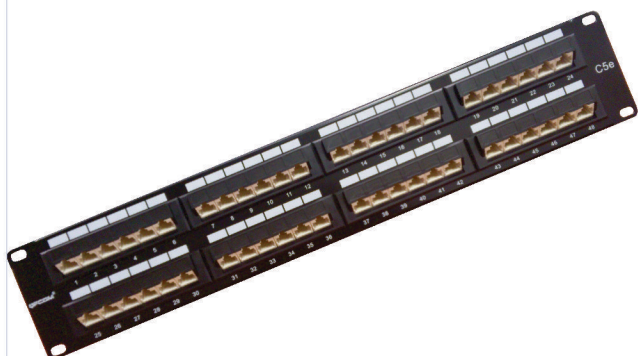
- Provides 48-Ports in 2RMU
- Meets or exceeds applicable TIA/EIA-568
- Universal Wiring - may be terminated to either T568A or T568B
- Adhesive labels are optional for port identification

Description

The 48 ports patchdown Patch Panel Cat5e provides connection to cabling networks in 2RMU

Performance

- T568A and T568B wiring.
- Insertion force: 20N max. (IEC 60603-7-4)
- Retention strength: 7.7 kg between Jack and Plug.
- Operating temperature: -10°C to 60°C (ISO/IEC 11801, ANSI/TIA/EIA 568 B.2)
- Life (mating cycles):
 - *Jack: 750 cycles min. (ISO/IEC 11801, IEC 60603-7-4)
 - *IDC: Suitable for 22-26 AWG stranded and solid wire, compatible with both 110 and Krone punch down tools.
- The cat. 5e transmission performance is in compliance with the ANSI/TIA/EIA 568 B.2 standard.



QP - PP48E

Cat. 5E, Patch Panel 45° Degrees, 48 Ports, T568A/B

Material

1. Panel: SPCC, 1.5 mm thickness with Black (RAL 9005) color painted.

2. RJ45 Jack:
Housing: PBT+gLASS fiber, UL 94V - 0
Contact Bracket: PBT+Glass Fiber, UL 94 - 0

3. RJ45 Jack Contact:
Material: Phosphor Bronze with Nickel Plated.
Finish: 50 micro-inch Gold plated on Plug contact area.

4. IDC:
Housing: PC+Glass Fiber, UL 94V-2.
Terminal: Phosphor Bronze with Tin plated.

5. Jack Bracket Set: ABS, UL 94V-0.

6. Cable Holder: Nylon

7. PCB: Fr4, UL 94-0.

